



CraftMate

Scan, Select, Process!

CraftMate is a No code robotic software platform that enables easy control of robots and flexible automation of finishing applications such as grinding, sanding and polishing. It helps companies overcome challenges such as high changeover time and lack of flexibility in batch manufacturing by eliminating the complex and time-consuming reconfiguration.

CraftMate is flexible, multi-purpose and user friendly and unlike complex offline programming solutions, it can be easily reconfigured to process new parts, by adding new tools, sensors and software, which makes it highly valuable when manufacturing high mix low volume parts.

Typical applications

- Weld seam removal
- Paint removal
- Surface burr removal
- Stamping tool maintenance
- 3D print part post-processing
- Composite grinding
- Wooden furniture finishing and refurbishing
- Dry buffing
- Wet buffing
- Rim polishing



> Fast reconfiguration

Quickly create programs directly on the part and re-run programs to process a batch.

> No need for precise part placement & tolerances

By using 3D vision the operator is not reliant on the precise placement of the part or tolerances between CAD file and real dimensions, which assures consistent outcome each time.

> No robotic experience required

Using our teach methods an operator with no previous robotic experience is able to instruct the robot to perform the required task.



Key features

- Robot agnostic
- Easy to integrate check-circle Automate without CAD files
- Introduce and process new objects in minutes
- Change tool/abrasive in minutes
- Easy to operate and (re)configure
- Configure the modular system to fit your application



Nordbo Robotics A/S

Nordbo Robotics is a Danish company developing robotic software that enables No code automation of complex surface treatment and quality inspection.

By combining the process know-how from craftsmen with the repeatability and precision of robots, we help companies improve their manufacturing capabilities and scale their businesses.



📍 Noatunvej 2, 5000 Odense, Denmark

☎ +45 81 81 98 81

✉ info@nordbo-robotics.com

CVR/VAT: DK 34697728

Digital twin

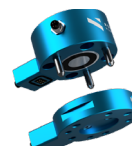
Digital twin is a powerful feature that CraftMate software platform is empowered with. It is a virtual representation of a product or a process allowing workers to preview and assess jobs to be done.

In a manufacturing setup having a digital twin enables virtual troubleshooting, for example, previewing physical restrains or collisions between a tool and an object being processed. This helps assure product quality and plan for future improvements; also, it allows workers to test, validate and refine their ideas.

Nordbo Robotics Components



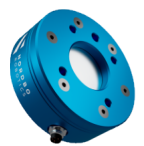
Flexible Spindle Mount



Magnetic Tool Changer



Active Compensation Unit



Force Torque Sensor